



Aras Office Connector 20

Installation Guide

Document #: 20.0.2022093001

Last Modified: 6/6/2022

Copyright Information

Copyright © 2022 Aras Corporation. All Rights Reserved.

Aras Corporation
100 Brickstone Square
Suite 100
Andover, MA 01810

Phone: 978-691-8900

Fax: 978-794-9826

E-mail: support@aras.com

Website: <https://www.aras.com>

Notice of Rights

Copyright © 2022 by Aras Corporation. This material may be distributed only subject to the terms and conditions set forth in the Open Publication License, V1.0 or later (the latest version is presently available at <http://www.opencontent.org/openpub/>).

Distribution of substantively modified versions of this document is prohibited without the explicit permission of the copyright holder.

Distribution of the work or derivative of the work in any standard (paper) book form for commercial purposes is prohibited unless prior permission is obtained from the copyright holder.

Aras Innovator, Aras, and the Aras Corp "A" logo are registered trademarks of Aras Corporation in the United States and other countries.

All other trademarks referenced herein are the property of their respective owners.

Notice of Liability

The information contained in this document is distributed on an "As Is" basis, without warranty of any kind, express or implied, including, but not limited to, the implied warranties of merchantability and fitness for a particular purpose or a warranty of non-infringement. Aras shall have no liability to any person or entity with respect to any loss or damage caused or alleged to be caused directly or indirectly by the information contained in this document or by the software or hardware products described herein.

Table of Contents

Send Us Your Comments	4
Document Conventions	5
1 Overview.....	6
2 Installing Aras Innovator	7
2.1 Aras Innovator	7
2.2 Confirming the Aras Innovator Installation	7
2.3 Feature License Key	8
2.3.1 <i>Requesting a Feature License</i>	8
2.3.2 <i>Installing the License</i>	8
3 Installing Aras Office Connector Server Components	9
3.1 Notification and Backup	9
3.2 Applying the Aras Office Connector AML Package	9
3.2.1 <i>Automated Installation Option</i>	9
3.2.2 <i>Manual Installation Option</i>	12
3.3 Confirming the Installation.....	16
4 Installing the Aras Office Connector Client Components	17
4.1 Installing the Microsoft Office Add-In	17
5 Post Installation	24
6 Upgrading from a Previous Version.....	25
6.1 Upgrading from version 12 of Aras Office Connector	25
6.2 Upgrading from version 14 of Aras Office Connector	25

Send Us Your Comments

Aras Corporation welcomes your comments and suggestions on the quality and usefulness of this document. Your input is an important part of the information used for future revisions.

- Did you find any errors?
- Is the information clearly presented?
- Do you need more information? If so, where and what level of detail?
- Are the examples correct? Do you need more examples?
- What features did you like most?

If you find any errors or have any other suggestions for improvement, indicate the document title, and the chapter, section, and page number (if available).

You can send comments to us in the following ways:

Email:

TechDocs@aras.com

Subject: Aras Product Documentation

Or,

Postal service:

Aras Corporation
100 Brickstone Square
Suite 100
Andover, MA 01810
Attention: Aras Technical Documentation

If you would like a reply, provide your name, email address, address, and telephone number.

If you have usage issues with the software, visit <https://www.aras.com/support/>

Document Conventions

The following table highlights the document conventions used in the document:

Convention	Description
Bold	Emphasizes the names of menu items, dialog boxes, dialog box elements, and commands. Example: Click OK .
Code	Code examples appear in <code>courier</code> font. It may represent text you type or data you read.
<code>Yellow highlight</code>	Code highlighted in yellow draws attention to the code that is being indicated in the content.
<code>Yellow highlight with red text</code>	Red text highlighted in yellow indicates the code parameter that needs to be changed or replaced.
<i>Italics</i>	Reference to other documents.
Note:	Notes contain additional useful information.
Warning	Warnings contain important information. Pay special attention to information highlighted this way.
Successive menu choices	Successive menu choices may appear with a greater than sign (-->) between the items that you select consecutively. Example: Navigate to File --> Save --> OK .

1 Overview

This document provides detailed instructions for the installation of the Aras Office Connector integration between Aras Innovator and Microsoft Office. The steps described in this document are intended to allow a novice administrator to install Aras Office Connector. However, more general knowledge of system administration, network deployment, and Aras Innovator administration is recommended.

The following are the basic sequence of steps to fully install the Aras Office Connector.

1. Install Aras Innovator.
2. Install Aras Office Connector components in Aras Innovator.
3. Install Aras Office Connector components to Microsoft Office.

Note: The following procedures are based on new installations of Microsoft Office and Aras Innovator, and you should contact your vendor for assistance if you are working with a customized instance of either product.

2 Installing Aras Innovator

The first step required to install Aras Office Connector is to set up the Aras Innovator instance that will be used. This section describes the three major steps for setting up your Aras Innovator instance for use with Aras Office Connector.

2.1 Aras Innovator

The first step is to install Aras Innovator. Subscribers can get the Aras Innovator CD Image from the Aras FTP site in the InnovatorLatestRelease folder.

Get the Installation documentation for the Aras Innovator instance from the Documentation folder of the Aras Innovator CD Image.

At the time of release, the following version of Aras Innovator is supported by the Aras Office Connector 20:

- Aras Innovator 20

If you are using an earlier version of Aras Innovator, please upgrade before installing the connector. For any upgrade assistance, consult Aras Support (support@aras.com) before installing Aras Office Connector.

2.2 Confirming the Aras Innovator Installation

Use the following procedure to check if your Aras Innovator code tree and database meet the minimum requirements to apply the Aras Office Connector Solution AML:

1. Log in to Aras Innovator as an administrator.
2. From the Main Menu select **Help --> About**.
3. Confirm that the dialog shows the following:
 - Release 20
4. Close the dialog.
5. From the TOC, select **Administration\Variables**.
6. Confirm that the following variable is listed:

Version Major	Version Minor	VersionServiceUpdate	VersionLabel
14	0	6	Release 20

2.3 Feature License Key

Aras Office Connector requires a Feature License to run. To check whether a valid Feature License exists in the Aras Innovator Database:

1. Log into Aras Innovator as an administrator.
2. Go to **Administration\Feature Licenses**.
3. The Aras Office Connector is activated with the Feature License provided for the Subscription. If a Subscription feature license is found, check the expiration date to confirm that the license is still active.

2.3.1 Requesting a Feature License

In order to request a feature license activation key, customers with an active Aras subscription can send an email to licenses@aras.com or to their account representative using the following format:

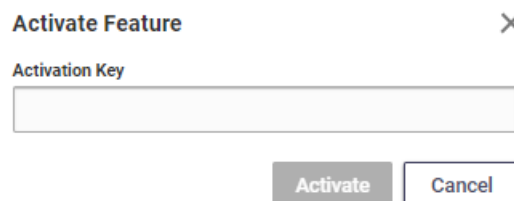
- Subject – “Aras Office Connector Activation Key Required”
- Body - Version of Aras Innovator

You will receive a reply containing the Feature License activation key.

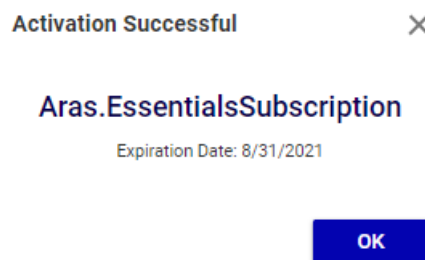
2.3.2 Installing the License

Once you have the activation key, install the feature license as follows:

1. Log into Aras Innovator as an administrator.
2. From the main menu toolbar, select **Tools --> Admin --> Licenses --> Activate Feature**.



3. Paste the acquired activation key and click **Activate Feature** button.
A success message similar to the following should appear.



3 Installing Aras Office Connector Server Components

Once the installation of Aras Innovator is complete and confirmed, the Aras Office Connector must modify the Aras Innovator database with the metadata required to run the integration. Before applying these changes, you should confirm you have all required components.

Requirements:

- Aras Innovator 20
- Aras Office Connector Feature License
- Aras Update Tool
- or
- Aras Innovator Package Import Export Utilities

3.1 Notification and Backup

1. Notify users that the system will be down at a scheduled time, and they should log out of the system prior to the start of the process.

Note: It is best to give at least 24-hour notice, as well as a reminder 15 minutes prior to the upgrade.

2. Backup the database.
3. Place this file in a safe location, as it will be necessary to restore from it if the process fails.

3.2 Applying the Aras Office Connector AML Package

It is possible to install Aras Office Connector using the Automated Installation Option (using the Aras Update tool) or the Manual Installation Option (using the Aras Import Tool).

3.2.1 Automated Installation Option

1. Copy and unzip the Aras Office Connector CD Image on the local computer.
2. Enable the Super User login.
3. Launch the **ArasUpdate.exe** file as administrator.

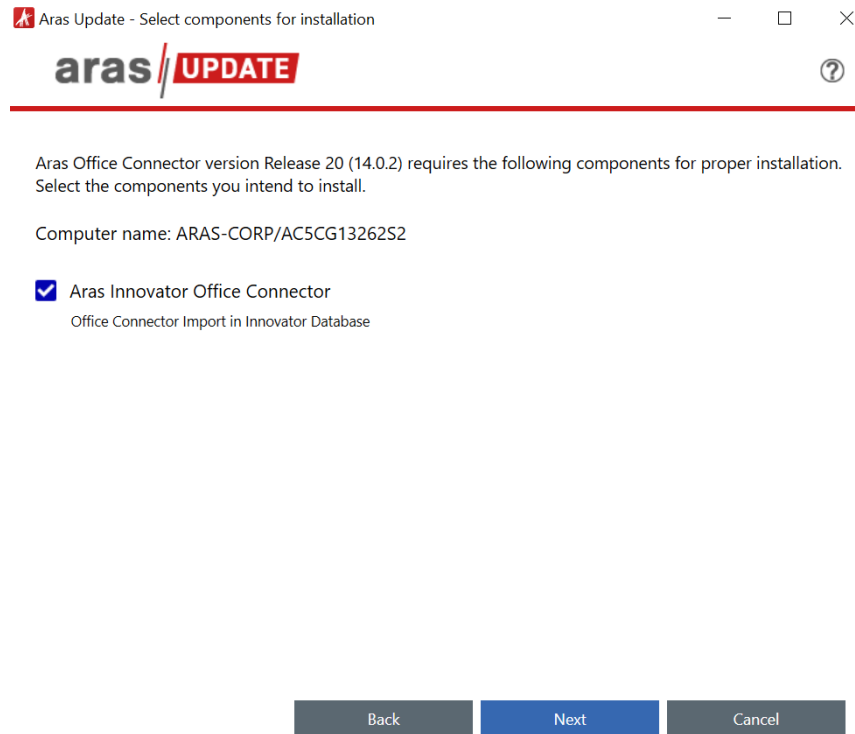
On a default installation, the **ArasUpdate.exe** file can be found in the C:\Program Files (x86)\Aras\Aras Update\ directory.

4. Click on the **Local** option on the left sidebar and then add the package reference to Aras Office Connector.

The package should point to the top level of the Aras Office Connector CD Image.

5. Select the appropriate logging option and click **Next**.

The logging option is used to record the installation attempt and can be used to troubleshoot issues.



6. Input the connection information and click **Install**.

Aras Update

aras UPDATE

Enter the following parameters for each component you are going to install and then click Install button to continue.

✓ Aras Innovator Office Connector

Server URL

Database

Username

Password

Back Install Cancel

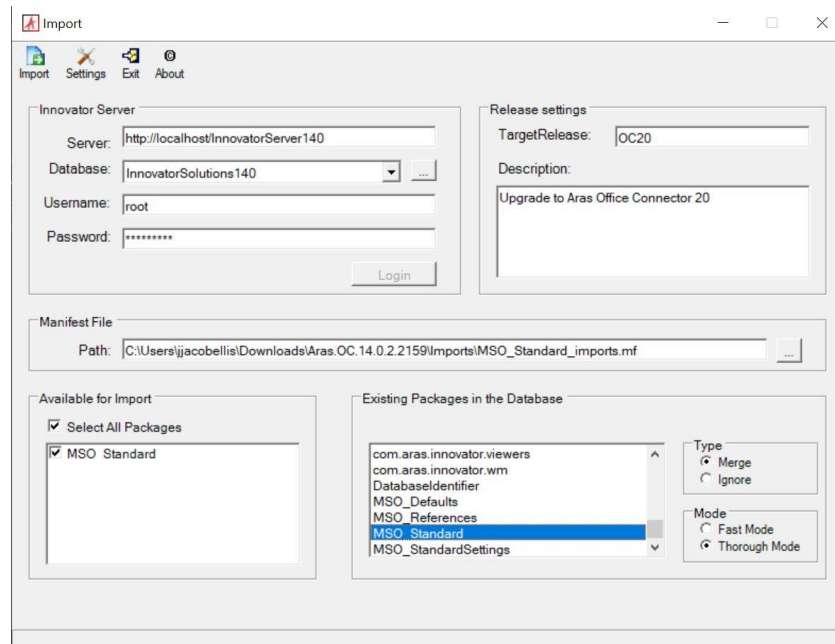
- **Server URL** = The connection URL for Aras Innovator
- **Database** = The target Aras Innovator database
- **Username** = root
- **Password** = Password for “root” login (Default is “innovator”)

Aras Update should import everything required for Aras Office Connector.

7. After the import is complete, disable the Super User login.

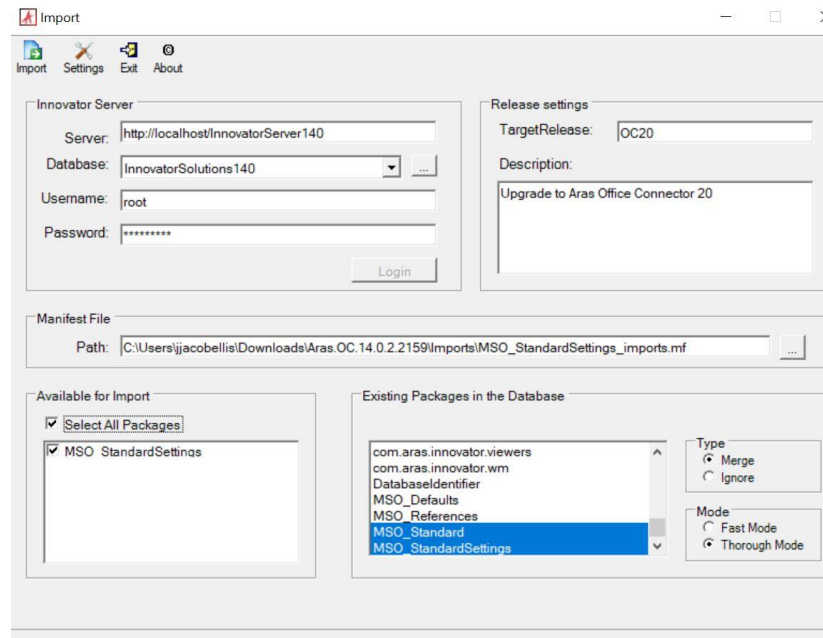
3.2.2 Manual Installation Option

1. You will need to import the database package with the Package Import Export Utilities (For more information using this tool, please see the *Aras Innovator 20 - Package Import Export Utilities* documentation.)
 - a. You will need to enable the “Super User” login to perform this step.
 - b. Browse to the \PackageImportExportUtilities\Import\ folder and run the Import.exe file



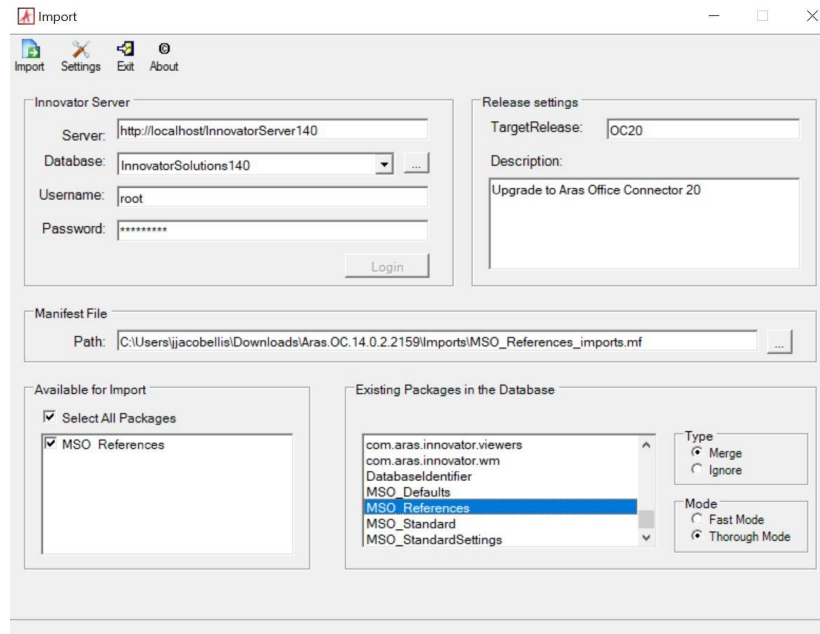
- c. Enter the following information:
 1. Server = The connection URL for Aras Innovator
 2. Database = The target Aras Innovator database
 3. Username = root
 4. Password = Password for “root” login (Default is “innovator”)
 5. Target Release = OC20
 6. Description = Aras Office Connector 20
 7. Manifest File Path = The manifest is found in the unzipped patch folder in \Aras Office Connector 20\Imports\MSO_Standard_imports.mf
 8. Available for Import = Check all packages
 9. Type = Merge
 10. Mode = Thorough Mode
- d. Click the **Import** button.

2. After the import is completed, import the default Standard Setting items.



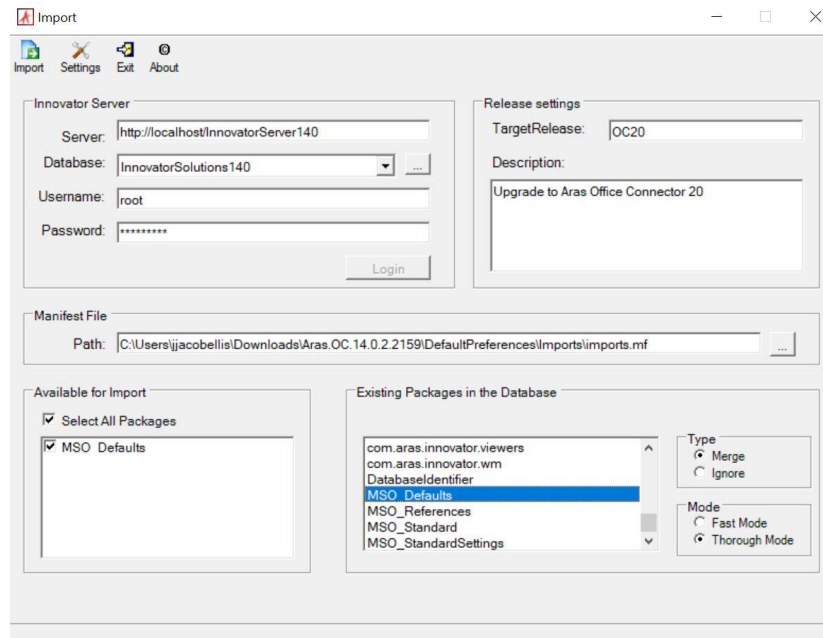
- a. Input the connection information:
 1. Server = The connection URL for Aras Innovator
 2. Database = The target Aras Innovator database
 3. Username = root
 4. Password = Password for “root” login (Default is “innovator”)
 5. Target Release = OC20
 6. Description = Aras Office Connector 20 Standard Settings
 7. Manifest File Path = The manifest is found in the unzipped patch folder in \Aras Office Connector 20\Imports\MSO_StandardSettings_imports.mf
 8. Available for Import = Check "MSO References"
 9. Type = Merge
 10. Mode = Thorough Mode
- b. Click the **Import** button again.

3. After the import is completed, import the default Reference items.



- a. Input the connection information:
 1. Server = The connection URL for Aras Innovator
 2. Database = The target Aras Innovator database
 3. Username = root
 4. Password = Password for "root" login (Default is "innovator")
 5. Target Release = OC20
 6. Description = Aras Office Connector 20 Default References
 7. Manifest File Path = The manifest is found in the unzipped patch folder in \Aras Office Connector 20\Imports\MSO_References_imports.mf
 8. Available for Import = Check "MSO References"
 9. Type = Merge
 10. Mode = Thorough Mode
- b. Click the **Import** button again.

4. After Reference items are imported, import the default preferences.



- a. Input the connection information:
1. Server = The connection URL for Aras Innovator
 2. Database = The target Aras Innovator database
 3. Username = root
 4. Password = Password for “root” login (Default is “innovator”)
 5. Target Release = OC20
 6. Description = Aras Office Connector 20 Default Preferences
 7. Manifest File Path = The manifest is found in the unzipped patch folder in \Aras Office Connector 20\Optional\DefaultPreferences\Imports\imports.mf
 8. Available for Import = Check "MSO Defaults"
 9. Type = Merge
 10. Mode = Thorough Mode
- b. Click the **Import** button again.

Note: Remember to disable the “Super User” login once you are done. This login should not be enabled in production.

3.3 Confirming the Installation

Use the following procedure to check if your database has been updated correctly:

1. Log in to Aras Innovator as an administrator.
2. From the TOC, select **Administration\Variables**.
3. Confirm the following variable:

Name	Value
Office Connector	14.0.2

If at any time the installation fails, revert to your backups and contact Aras Support at support@aras.com.

4 Installing the Aras Office Connector Client Components

The Aras Office Connector must modify Microsoft Office to add the integration components. Before applying these changes, you should confirm your installation of Microsoft Office meets the minimum requirements to run the Aras Office Connector integration.

Requirements:

- Windows 8.1, Windows 10, or Windows 11
- Microsoft Edge WebView2
- Microsoft Office 2013 (Enterprise or Professional editions recommended)
- Microsoft Office 2016 (Enterprise or Professional editions recommended)
- Microsoft Office 365, Desktop version
- Microsoft Office 2019 (Enterprise or Professional editions recommended)
- Microsoft Office 2021 (Enterprise or Professional editions recommended)

Note: Version 2013 of Microsoft Visio is not supported.

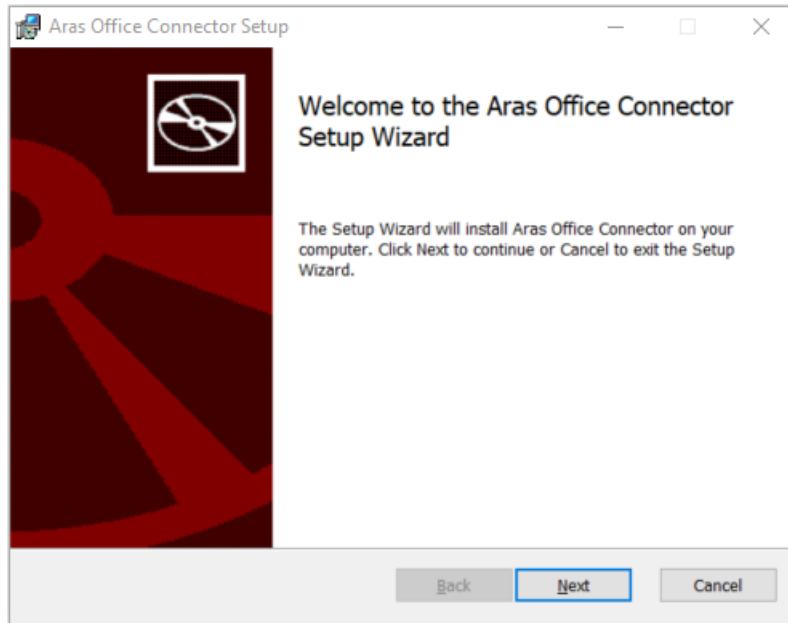
4.1 Installing the Microsoft Office Add-In

The Add-In requires that Microsoft Edge WebView2 be installed on the client machine. Microsoft Edge WebView2 is used by Aras Office Connector to handle logins into Aras Innovator.

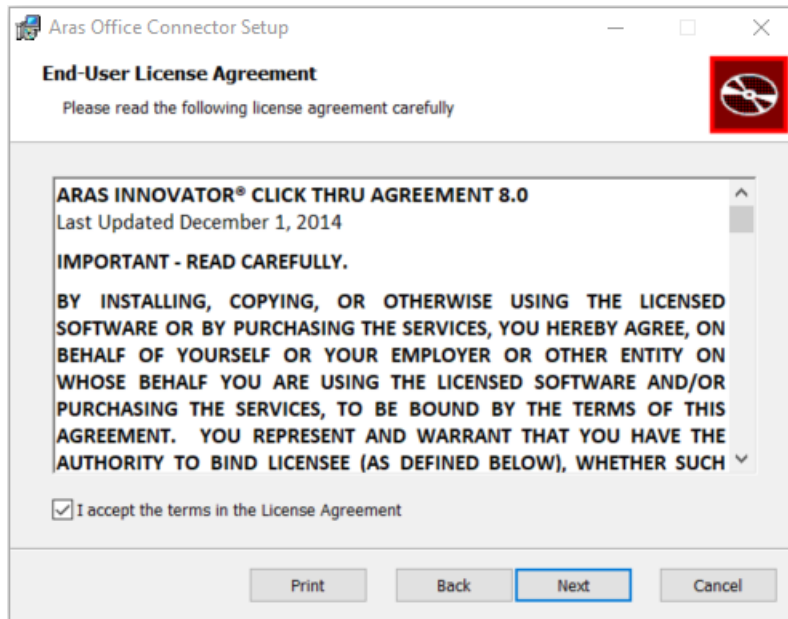
Note: If Microsoft Edge WebView2 is not installed on the client machine, the installation process will automatically download and install it.

1. Shut down all Office programs on the client PC:
 - Microsoft Outlook
 - Microsoft Word
 - Microsoft Excel
 - Microsoft PowerPoint
 - Microsoft Visio
2. Copy the `ArasOfficeConnectorSetup.msi` to the Client PC.
3. Run the `ArasOfficeConnectorSetup.msi`

4. Click **Next**.

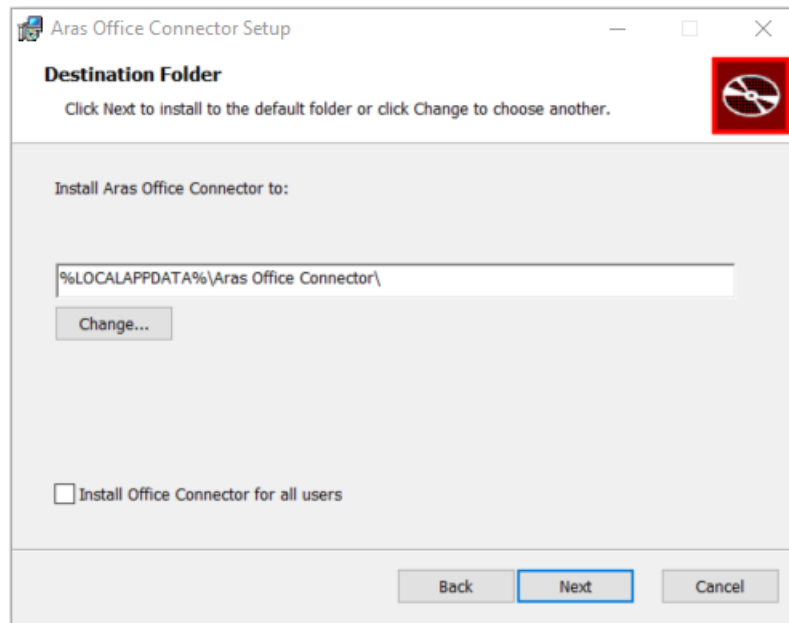


5. Accept the End-User License Agreement and click **Next**.

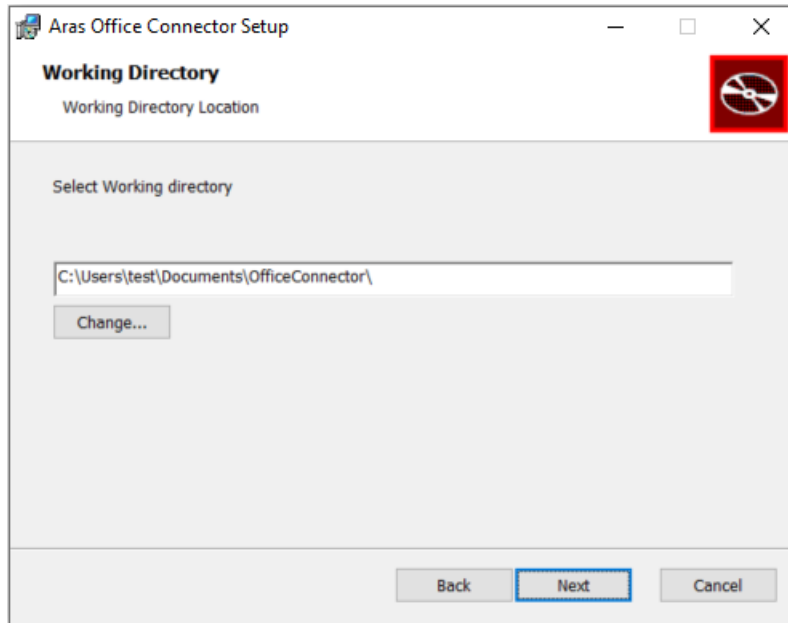


6. Specify the path where the Aras Office Connector client components will be installed in the Install **Aras Innovator Microsoft Office Connector to:** field.
 - a. (Optional) Check the **Install Office Connector for all users** option to install the extension for all users specified on the PC.

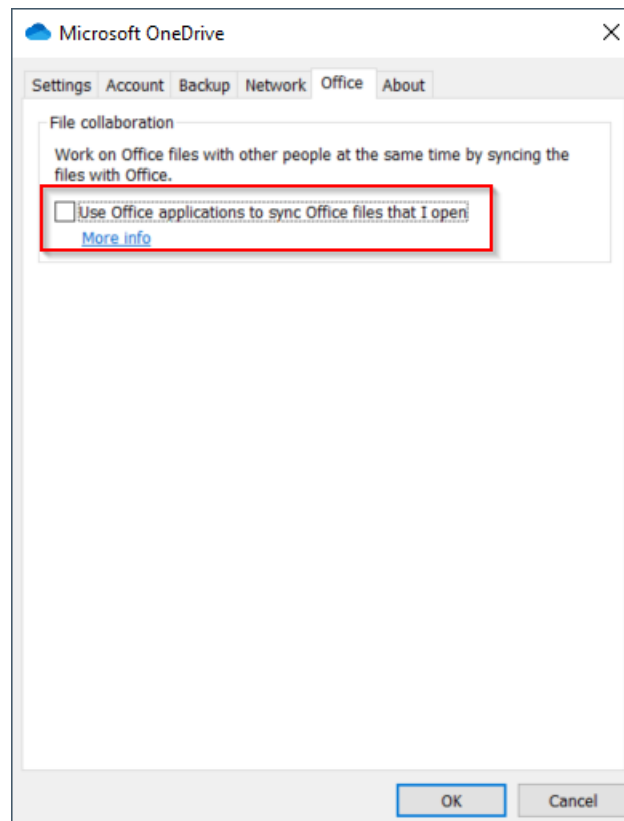
Note: By default it will be installed to %LOCALAPPDATA%\Aras Office Connector\
Selecting the **Install Office Connector for all users** changes the default directory to
C:\Program Files (x86)\Aras Innovator Microsoft Office Connector\



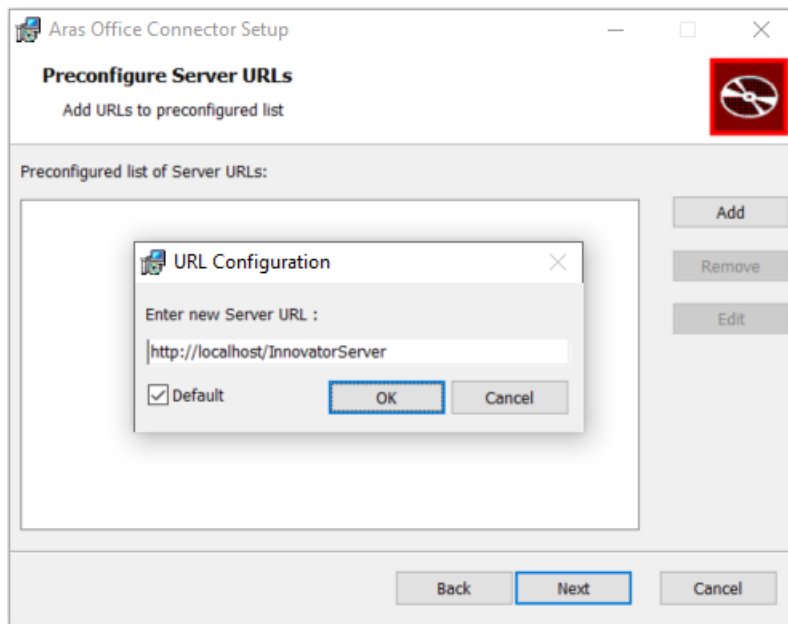
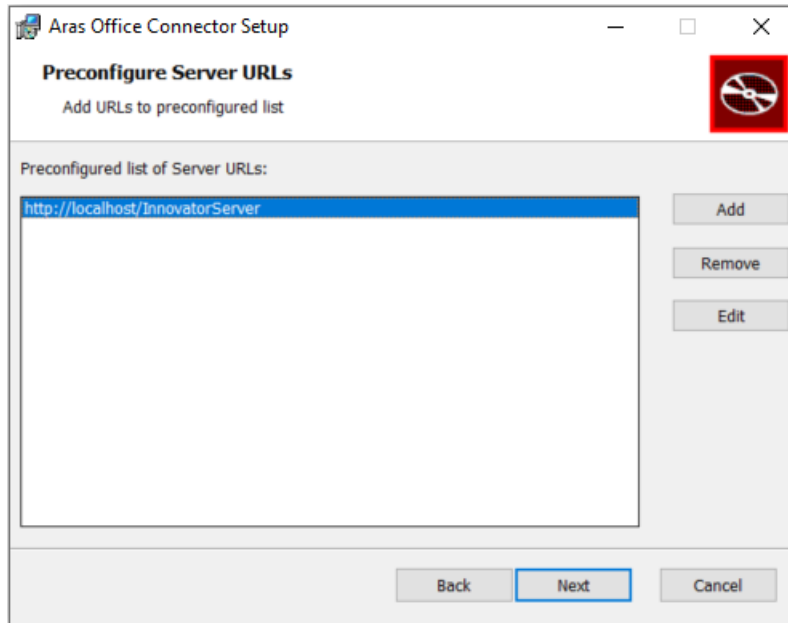
7. Specify the working directory that Aras Office Connector will use to download files locally.



Note: If choosing to use Microsoft OneDrive as the working directory, the option to **Use Office applications to sync Office files that I open** should be disabled as shown in the example here:

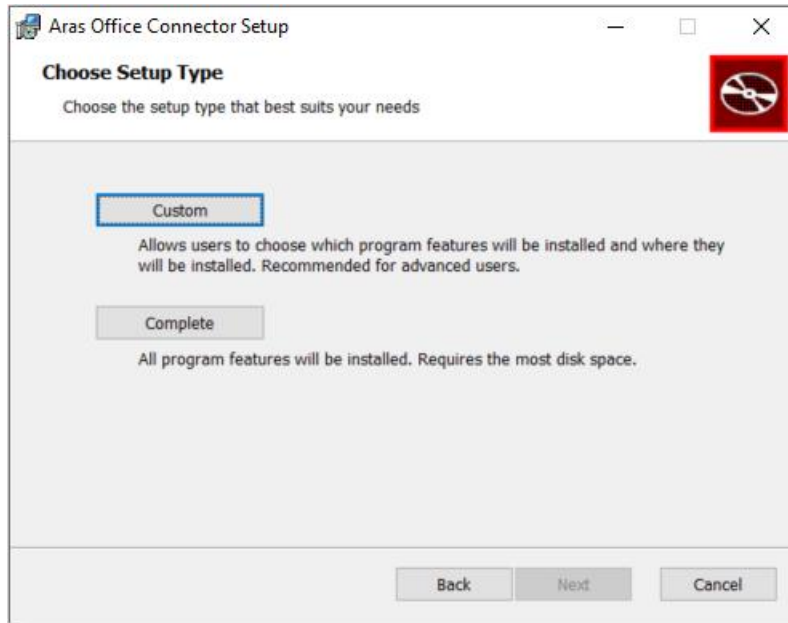


8. (Optional) Add any preconfigured URLs to connect to Aras Innovator.

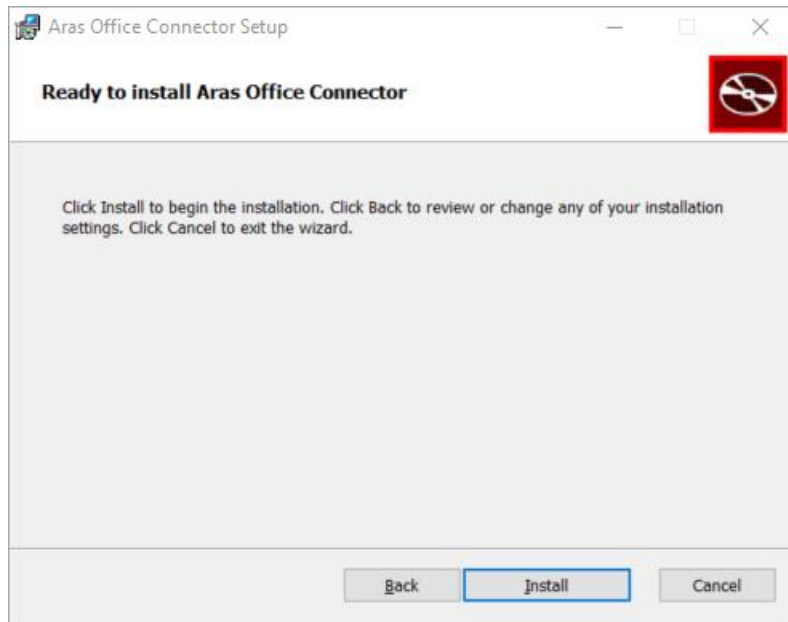


Note: These URLs will be preconfigured for the End User, but they will be able to change, add, or remove any URLs later.

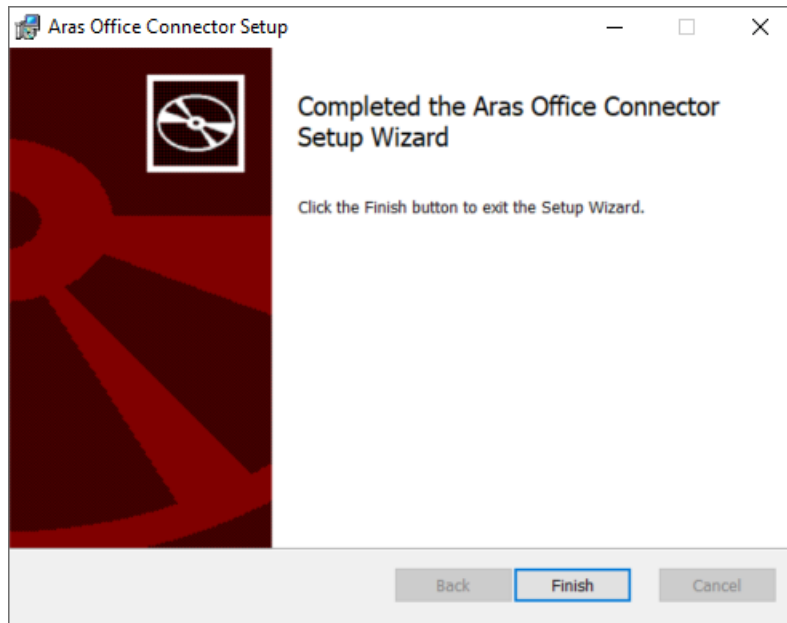
- Specify **Custom** to select the MS Office applications where Aras Office Connector should be installed, or **Complete** to install the add-on on all MS Office Applications.



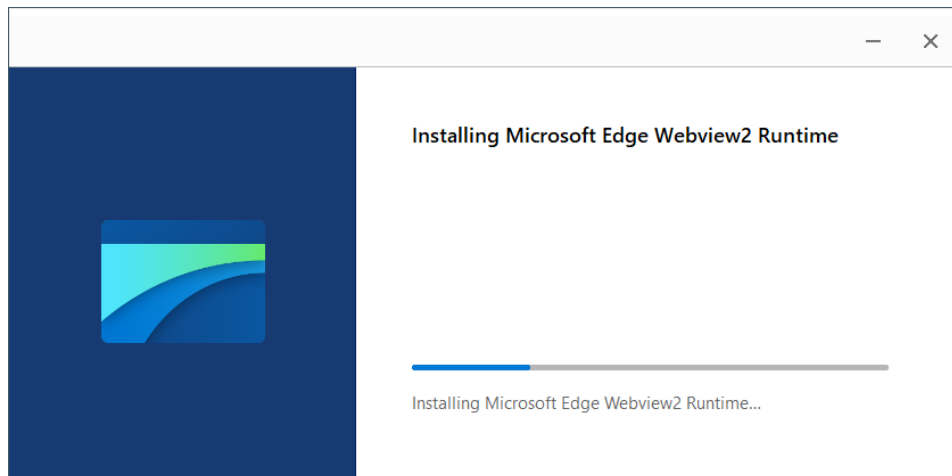
- Once MS Office applications have been selected, click **Install**.



11. Click **Finish** to exit from the installation.

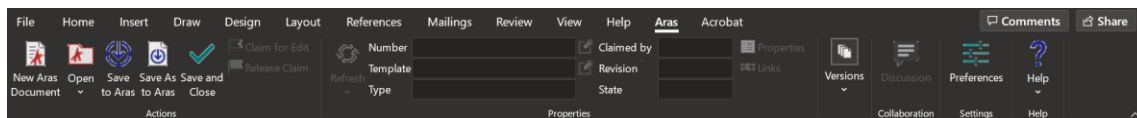


12. If the client machine does not have Microsoft Edge WebView2 installed, the installer will automatically download and install it.



13. Open Microsoft Word.

14. Confirm that the Aras ribbon has been added to Microsoft Word.



5 Post Installation

It is recommended that you review the *Aras Office Connector 20 – Administration Guide* after the installation is complete. Additional changes to the Document Form and Document Class Structure may be required to use all features.

For end-users, the *Aras Office Connector 20 - User Guide* is available from the Documentation folder of the CD Image. Additionally, the on-line help can be referenced from the Aras Ribbon in Office or directly at <https://www.aras.com/help/office/14-0-2/>.

6 Upgrading from a Previous Version

6.1 Upgrading from version 12 of Aras Office Connector

Upgrades from Office Connector version 12 to version 20 are done as part of the upgrade services of Aras Innovator. The upgrade Services are a benefit of a Premier Subscription package and can be requested as a service from Aras Support.

Note: When requesting Upgrade Services for an upgrade of Aras Innovator, notify Aras Support that your production instance includes Aras Office Connector.

6.2 Upgrading from version 14 of Aras Office Connector

The files necessary to upgrade Aras Office Connector 14 to version 20 are available in the 14.0.2 CD image, inside the **Aras Office Connector 20 Upgrade Patch.zip** file. For upgrade instructions, please refer to the *Aras Office Connector 20 - Upgrading from Version 14* guide.